

**TRACT A**  
 8.05 ACRES TOTAL  
 -1.17 AC. S. C. H. D. ROAD R/W  
6.88 ACRES NET

**TRACT B**  
 83.42 ACRES TOTAL  
 -3.63 AC. S. C. H. D. ROAD R/W  
 -1.49 AC. A. T. & T. CABLE R/W  
78.30 ACRES NET

**TRACT C**  
 262.96 ACRES TOTAL  
 -1.97 AC. S. C. H. D. ROAD R/W  
260.99 ACRES NET

NEEDS TO BE RESOLVED BY METERS

1	2	3	4	5	6	7	8	9	10
11	12	13	14	15	16	17	18	19	20
21	22	23	24	25	26	27	28	29	30
31	32	33	34	35	36	37	38	39	40
41	42	43	44	45	46	47	48	49	50
51	52	53	54	55	56	57	58	59	60
61	62	63	64	65	66	67	68	69	70
71	72	73	74	75	76	77	78	79	80
81	82	83	84	85	86	87	88	89	90
91	92	93	94	95	96	97	98	99	100

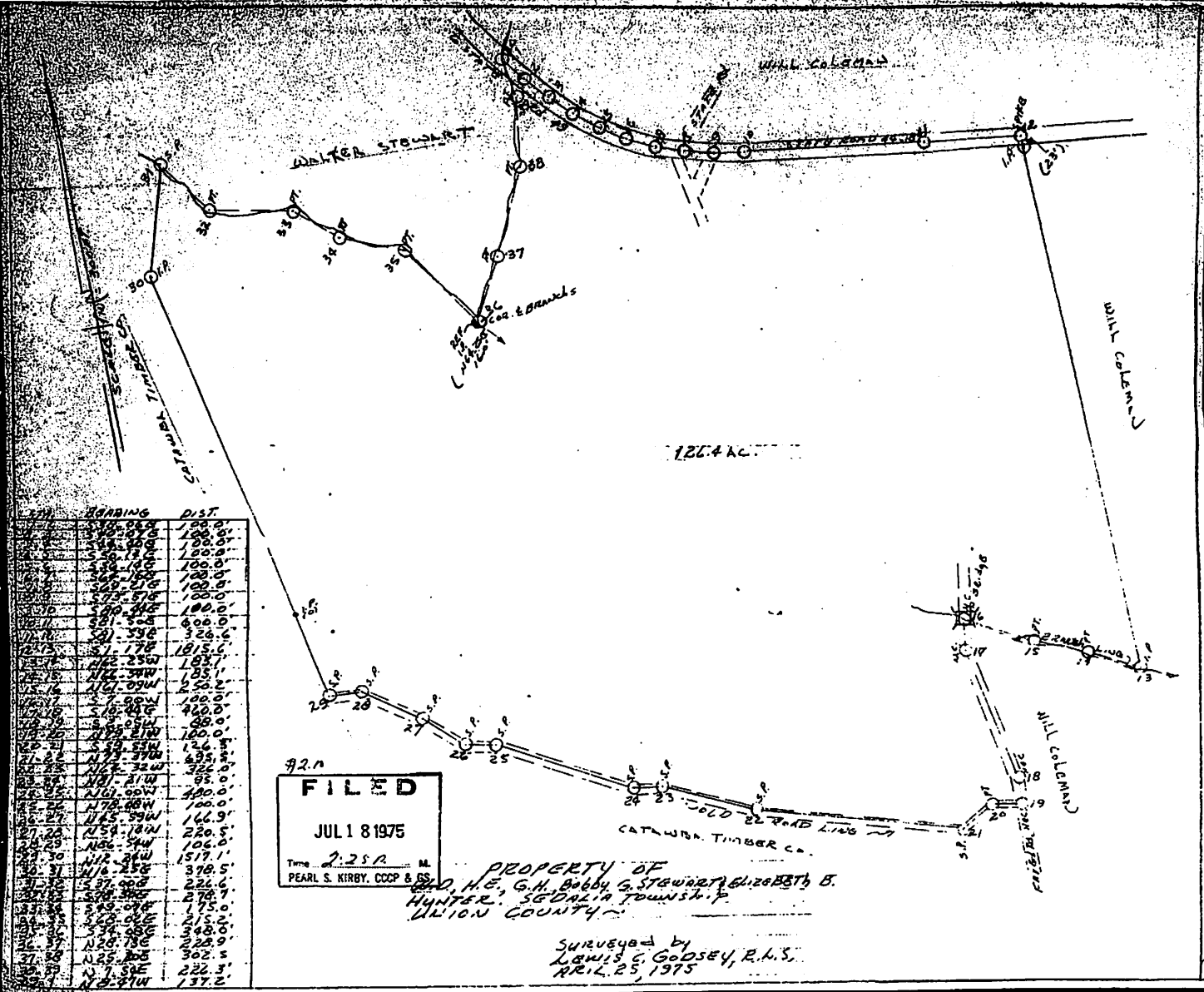
ALL RIGHTS RESERVED  
 BY THE STATE OF SOUTH CAROLINA

PLAT MADE IN ACCORDANCE WITH THE SURVEYING ACT OF 1943 AS AMENDED BY ACT 561 OF 1945 AND ACT 767 OF 1952.  
 ALL RIGHTS RESERVED BY THE STATE OF SOUTH CAROLINA

I hereby certify that the facts of production of this plat conform to the requirements of the Surveying Act of 1943 as amended by Act 561 of 1945 and Act 767 of 1952.

DATE OF SURVEY: 08/21/13

	<b>FADGET CREEK RESERVE, INC.</b> STATE OF SOUTH CAROLINA SURVEYOR 2013-2016
100' = 1"	<b>ADTECH SURVEYING, INC.</b> 1000 WEST 10TH AVENUE SUITE 200 DENVER, CO 80202



STATION	BEARING	DIST.
1	S 89° 04' W	100.0
2	S 89° 04' W	100.0
3	S 89° 04' W	100.0
4	S 89° 04' W	100.0
5	S 89° 04' W	100.0
6	S 89° 04' W	100.0
7	S 89° 04' W	100.0
8	S 89° 04' W	100.0
9	S 89° 04' W	100.0
10	S 89° 04' W	100.0
11	S 89° 04' W	100.0
12	S 89° 04' W	100.0
13	S 89° 04' W	100.0
14	S 89° 04' W	100.0
15	S 89° 04' W	100.0
16	S 89° 04' W	100.0
17	S 89° 04' W	100.0
18	S 89° 04' W	100.0
19	S 89° 04' W	100.0
20	S 89° 04' W	100.0
21	S 89° 04' W	100.0
22	S 89° 04' W	100.0
23	S 89° 04' W	100.0
24	S 89° 04' W	100.0
25	S 89° 04' W	100.0
26	S 89° 04' W	100.0
27	S 89° 04' W	100.0
28	S 89° 04' W	100.0
29	S 89° 04' W	100.0
30	S 89° 04' W	100.0
31	S 89° 04' W	100.0
32	S 89° 04' W	100.0
33	S 89° 04' W	100.0
34	S 89° 04' W	100.0
35	S 89° 04' W	100.0
36	S 89° 04' W	100.0
37	S 89° 04' W	100.0

**FILED**  
 JUL 18 1975  
 Time 2:25 P. M.  
 PEARL S. KIRBY, C.C.P. & S.

PROPERTY OF  
 WALTER STEWART & BETTY B.  
 HUNTER, SEORIA TOWNSHIP,  
 UNION COUNTY

Surveyed by  
 LEWIS C. GODSEY, P.L.S.  
 APRIL 25, 1975